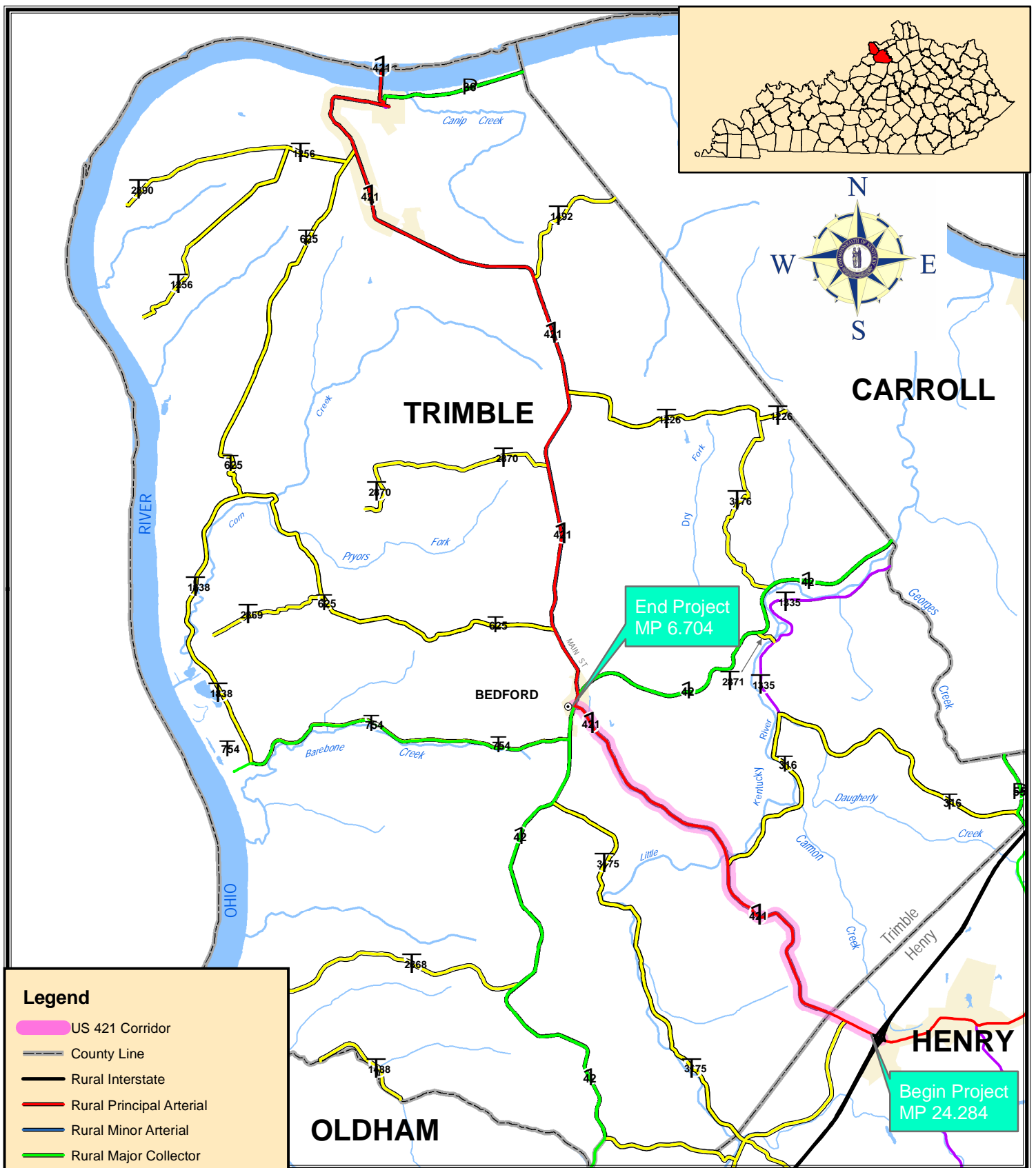
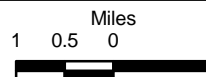


# **Appendix A**

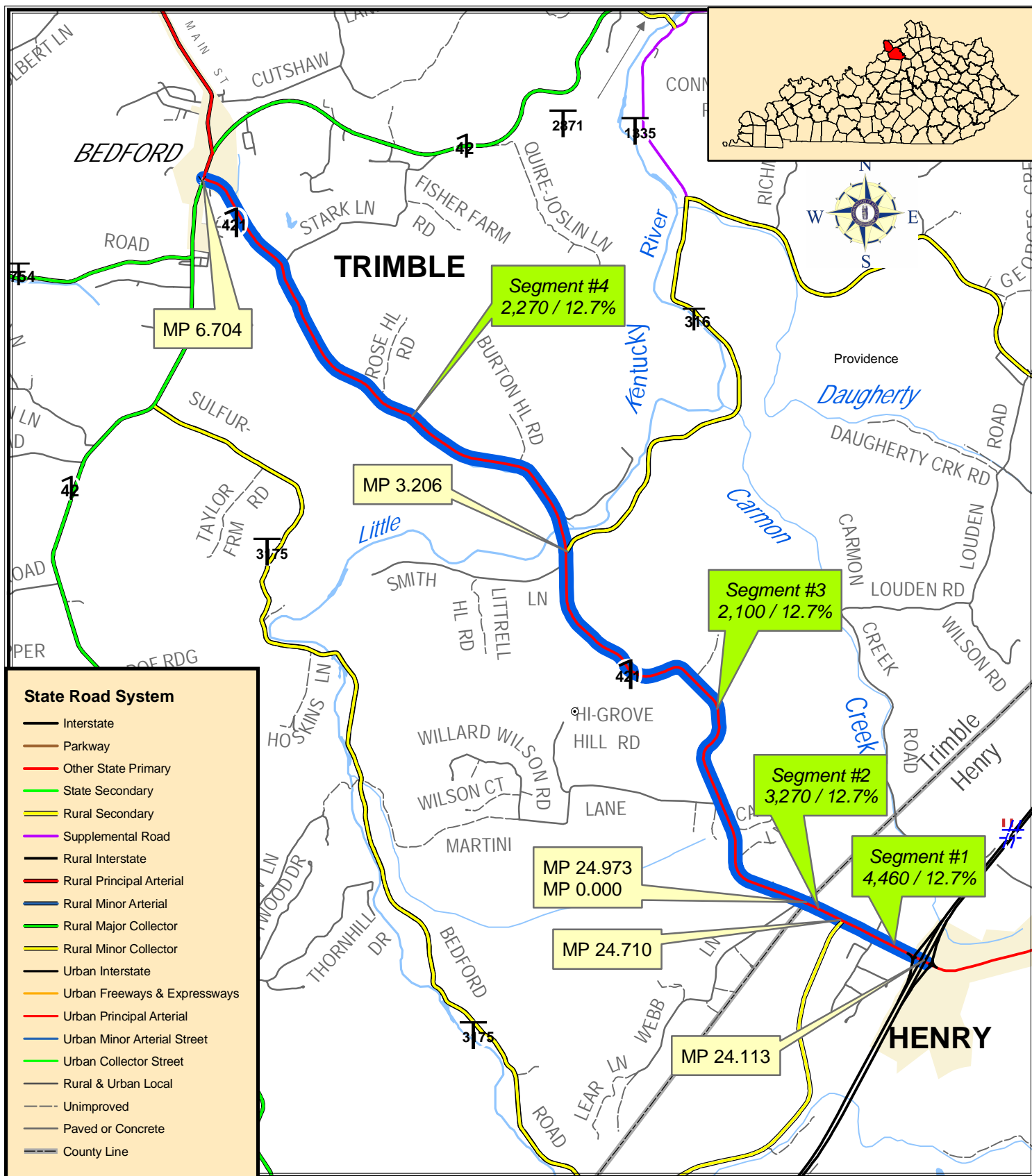
*Exhibits*



Last map revision: JANUARY 2007  
 Road centerlines collected using GPS technology  
 Kentucky State Plane Coordinate System (NAD83)  
[www.transportation.ky.gov/planning/](http://www.transportation.ky.gov/planning/)



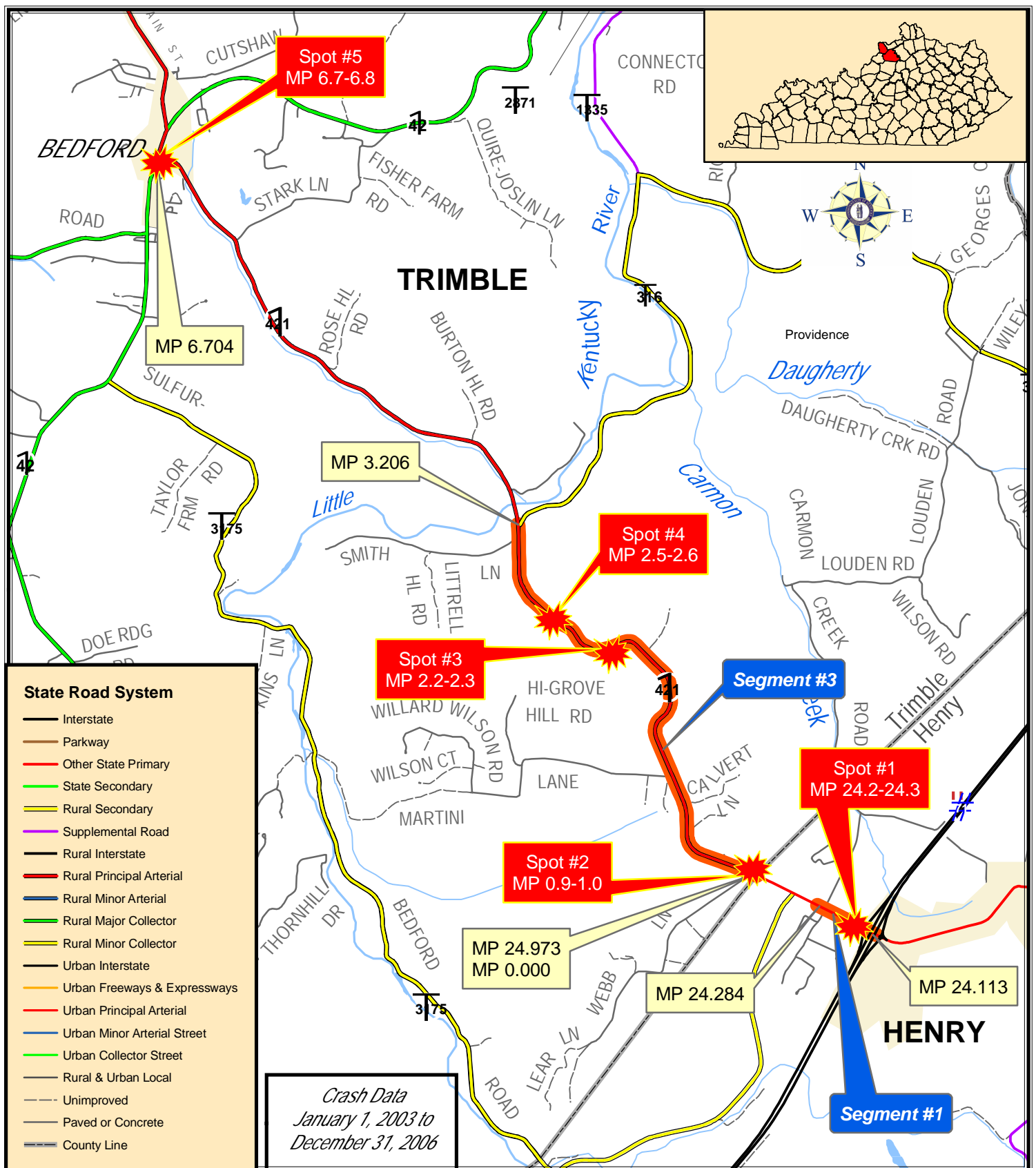
**Exhibit 1**  
**Project Location**  
**US 421**  
 Trimble & Henry Counties  
 I-71 to Bedford  
 Item No. 05 - 147.00



Last map revision: JANUARY 2007  
 Road centerlines collected using GPS technology  
 Kentucky State Plane Coordinate System (NAD83)  
[www.transportation.ky.gov/planning/](http://www.transportation.ky.gov/planning/)



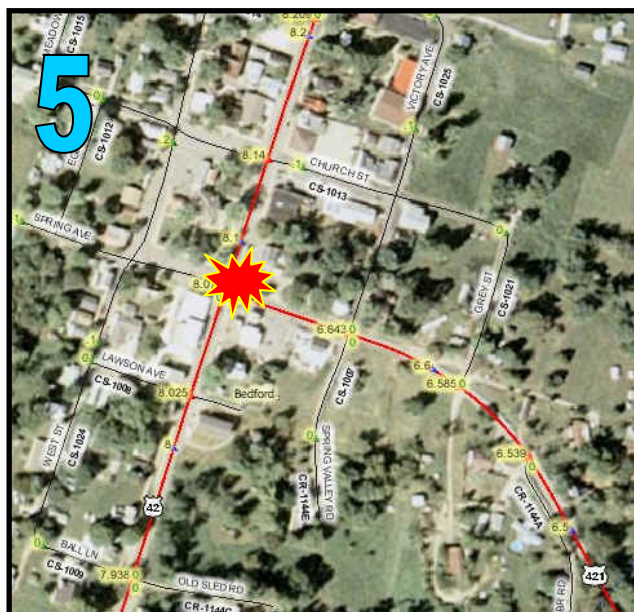
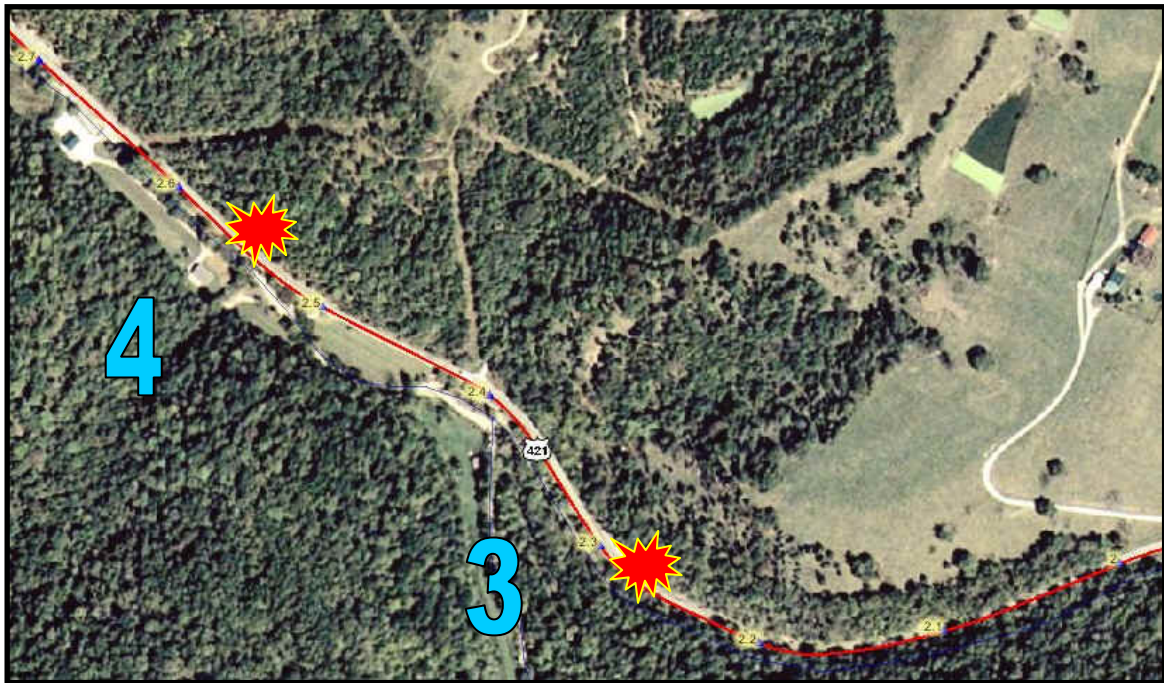
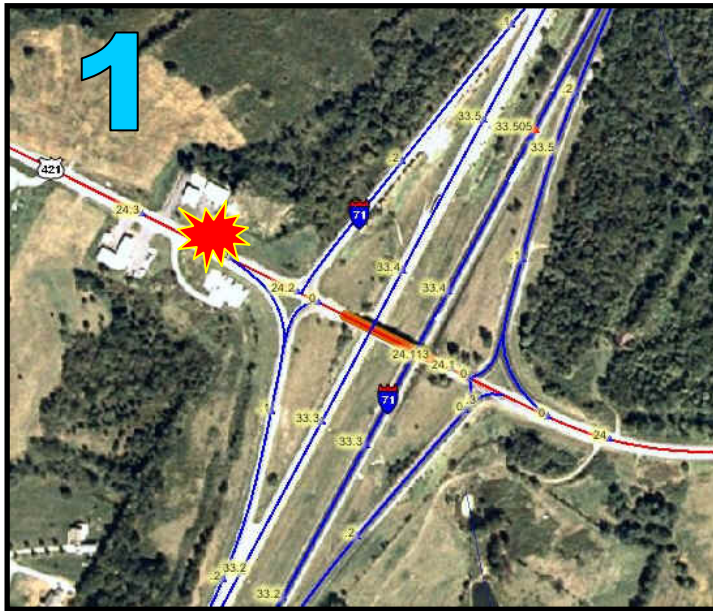




Last map revision: JANUARY 2007  
Road centerlines collected using GPS technology  
Kentucky State Plane Coordinate System (NAD83)  
[www.transportation.ky.gov/planning/](http://www.transportation.ky.gov/planning/)







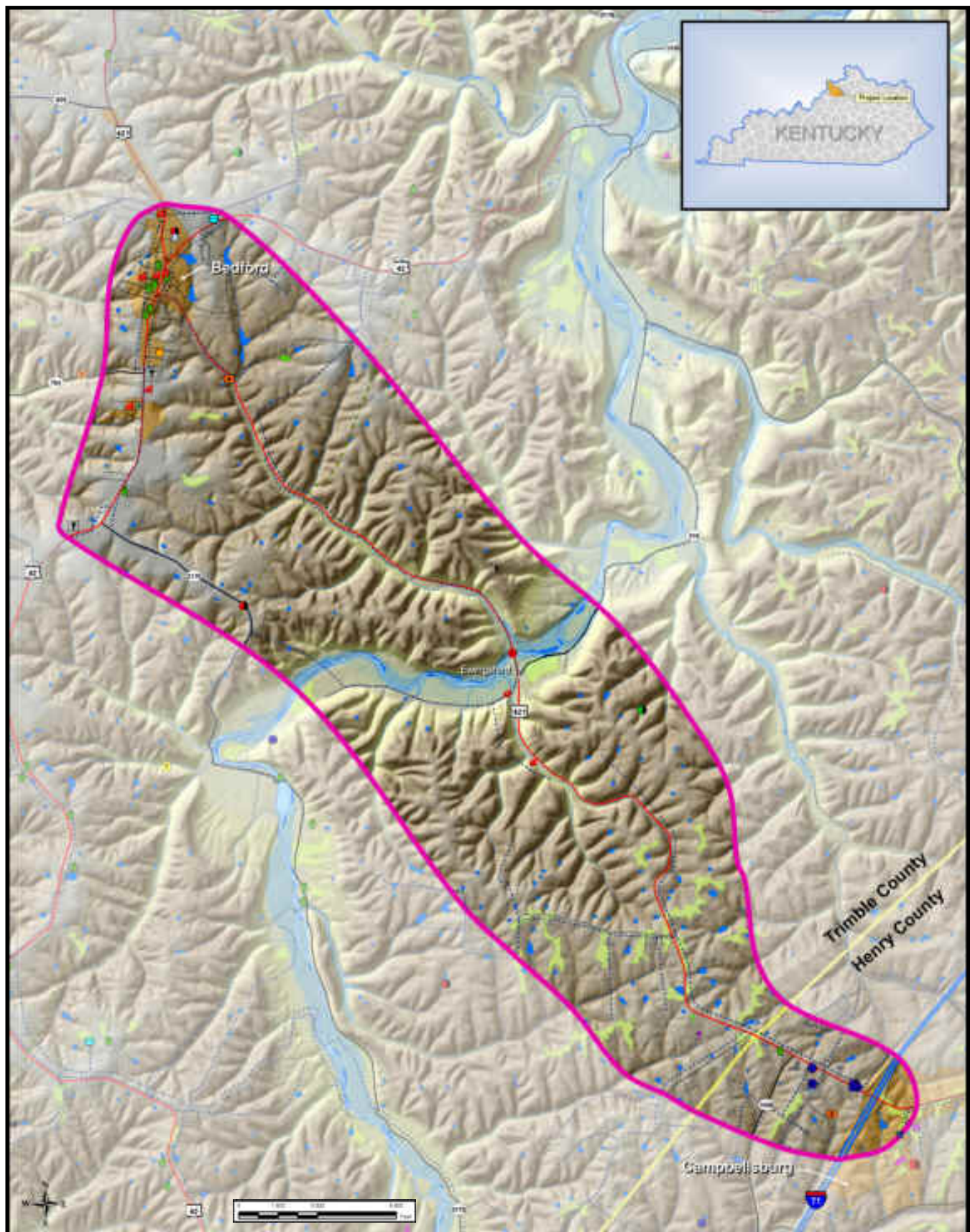
1. I-71 Interstate
2. Martini Lane Intersection
3. US 421 Horizontal Curve
4. US 421 Vertical Curve
5. US 421/ US 42 Intersection in Bedford



## Exhibit 5 Aerial View – High Crash Spots US 421 Trimble & Henry Counties

I-71 to Bedford  
Item No. 05 - 147.00





**Legend**

Community	Water Treatment Plant	Antenna Structure	Interstate
Church	Tomb	Ducklin Tower	US Highway
Cemetery	Box Flame Natural Gas	Gate	State Highway
HUD / Section Apartments	ODOLITE (EPA Site)	Leachlit	Local Road
Industry	PCS (EPA Site)	Gas Line	County Boundary
Norfolk State Police Post 8	REURS (EPA Site)	Power Line	River
Historic Structure	TRIS (EPA Site)	Water Line	Detention
Water Gauge	Debris and Abandoned Vial	Heat Road	Floodplain
Watermill	Sewage Treatment Plant	Structure	Pump & Dam
Public Water Source	Underground Storage Tank		Study Area
Water Tank	Archaeological Site		



**Exhibit 6**  
**Environmental**  
**Footprint**  
**US 421**  
Trimble & Henry

